

Welcome to TOK

# The Theory of Knowledge

With Your Host - *Mr. Black*

Please open your composition books (or whatever else you will be writing on at the moment). Without any discussion, on the first page write **Commonalities** across the top. Then make **three lists**: Three things I have in common with someone in the classroom, three different things I have in common with someone else at this school and three different things I have in common with someone else in this world.

To Theory of Knowledge

Welcome





Your **connections** to others

How you see, what **you know**, what **they know**, and those interactions are what this class is all about.

But now.....

# Prepare for the Journey





# For Now You Are





# Lost at Sea



# Lost at Sea

You have chartered a yacht with friends, for the holiday trip of a lifetime across the Atlantic Ocean. Because none of you have any previous sailing experience, you have hired an experienced skipper and two-person crew. Unfortunately in mid Atlantic a fierce fire breaks out in the ships galley and the skipper and crew have been lost whilst trying to fight the blaze. Much of the yacht is destroyed and is slowly sinking. Your location is unclear because vital navigational and radio equipment have been damaged in the fire. Your best estimate is that you are many hundreds of miles from the nearest landfall. You and your friends have managed to save 15 items, undamaged and intact after the fire. In addition, you have salvaged a four man rubber life craft and a box of matches.

Your task is to rank the 15 items in terms of their importance for you, as you wait to be rescued. Place the number 1 by the most important item, the number 2 by the second most important and so forth until you have ranked all 15 items.

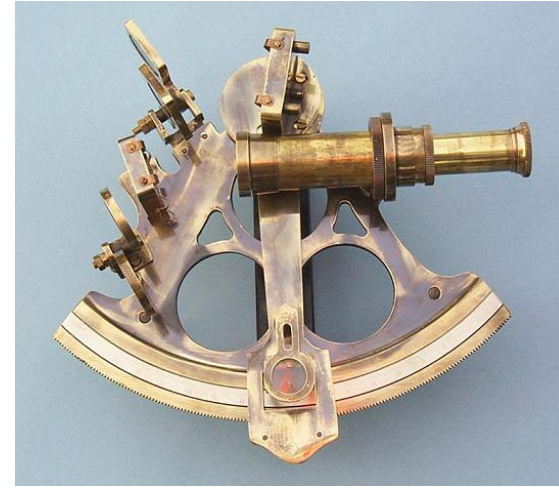
## Lost at Sea Ranking Chart

Items	Step 1	Step 2	Step 3	Step 4	Step 5
	Your individual ranking	Your team ranking	Coast Guard ranking	Difference between Step 1 & 3	Difference between Step 2 & 3
A sextant					
A shaving mirror					
A quantity of mosquito netting					
A 25 liter container of water					
A case of army rations					
Maps of the Atlantic Ocean					
A floating seat cushion					
A 10 liter can of oil/petrol mixture					
A small transistor radio					
20 square feet of opaque plastic sheeting					
A can of shark repellent					
One bottle of 160 proof rum					
15 feet of nylon rope					
2 boxes of chocolate bars					
An ocean fishing kit & pole					
			Totals	Your score	Team score



# Instructions

1. Provide a 'lost at sea ranking chart' for every member of your group.
2. Ask each person to take 5 minutes to decide their own rankings, and record the choices in the left-hand **Step 1** column.
3. Invite everyone to get into teams of 3/4. Encourage the group to discuss their individual choices and work together to agree on a collaborative list. Allow 10 minutes for this section. Record the group rankings in the second column (team rankings).
4. The correct answers were suggested by the US Coastguard. Display the 'expert' rankings on a PowerPoint presentation, whiteboard or photocopy. Compare your individual and group answers with the correct answers and determine a score.
5. For each item, mark the number of points that your score differs from the Coastguard ranking and then add up all the points. Disregard plus or minus differences. The **lower** the total, the better your score.
6. As the groups work together, sharing thoughts and ideas, this *should* produce an improved score over the individual results. Discuss with your group why the scores were different? What changed their minds? And was this enough to survive?



an instrument with a graduated arc of 60° and a sighting mechanism, used for measuring the angular distances between objects and especially for taking altitudes in navigation

# Coastguard expert analysis

According to the experts, in this case the US Coastguard, the basic supplies needed when a person is stranded mid-ocean are articles to attract attention and aid survival until rescue arrives. A transatlantic trip takes roughly 20 days; significantly less with good winds and significantly more without them. Articles for navigation are of little importance since even if a small life raft were capable of reaching land, it would be impossible to store enough food and water to survive for that amount of time. Without signaling devices, there is almost no chance of being spotted and rescued. So, the list below is the ranking order of the items according to their importance to your survival:



Item	Coast Guard Ranking	Coastguard Reasoning
A sextant	15	Useless without the relevant tables and a chronometer.
A shaving mirror	1	Of all the items, the mirror is absolutely critical. It is the most powerful tool you have for communicating your presence. In sunlight, a simple mirror can generate five to seven million candlepower of light. The reflected sunbeam can even be seen beyond the horizon.
A quantity of mosquito netting	14	There are NO mosquitoes in the middle of the Atlantic Ocean and the netting is useless for anything else.
A 25 liter container of water	3	Vital to restore fluids lost through perspiration. 25 liters will supply water rations for your group for several days.
A case of army rations	4	This is your basic food intake
Maps of the Atlantic Ocean	13	Worthless without navigation equipment.
A floating seat cushion	9	Useful as a life preserver if someone fell overboard.

A 10 liter can of oil/gasoline mixture	<b>2</b>	The second most critical item for signaling. The mixture will float on water and can be ignited using the matches.
A small transistor radio	<b>12</b>	You would be out of range of any radio station.
20 square feet of Opaque plastic sheeting	<b>5</b>	Can be used to collect rain water and shelter from the wind and waves.
A can of shark repellent	<b>10</b>	To repel sharks, of course!
One bottle of 160% proof rum	<b>11</b>	Contains 80% alcohol, which means it can be used as an antiseptic for any injuries, otherwise of little value. Very dangerous if drunk, as it would cause the body to dehydrate, the opposite of what you need to survive.
15ft nylon rope	<b>8</b>	Could be used to lash people or equipment together to prevent being washed overboard. There are a variety of other uses, but none high on the list for survival.
2 boxes of chocolate bars	<b>6</b>	Your reserve food supply
An ocean fishing kit with pole.	<b>7</b>	Ranked lower than the chocolate as there is no guarantee you will catch any fish. The pole might be used as a tent pole.



## Scores

00 - 25	Excellent.	You demonstrated great survival skills. Rescued!
26 - 32	Good.	Above average results. Good survival skills. Rescued!
33 - 45	Average.	Seasick, hungry and tired. Rescued!
46 - 55	Fair.	Dehydrated and barely alive. It was tough, but rescued!
56 - 70	Poor.	Rescued, but only just in time!
71 +	Very poor	Oh dear, your empty raft is washed up on a beach, weeks after the search was called off.

When do we learn more, when we agree or disagree? Write your explanation.

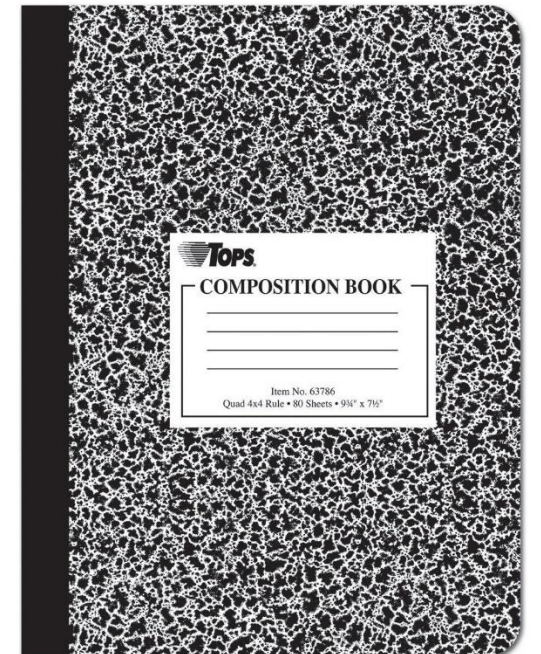


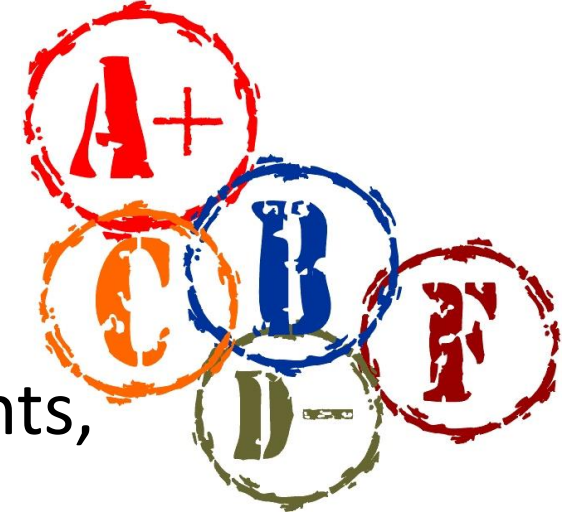
# We are in this together



# TOK Syllabus Important Points

- Contact Information
  - Mr. Black – [Black.Christopher.S@muscogee.k12.ga.us](mailto:Black.Christopher.S@muscogee.k12.ga.us)
  - [www.hardawayart.com](http://www.hardawayart.com)
    - Purchase **at least** one composition notebook. All daily entries will go in here.
- Major Projects/ Assignments
- TOK Presentation (there will be more than one)
- TOK Essay
  - THE OFFICIAL ESSAY WILL NOT HAPPEN UNTIL NEXT FALL



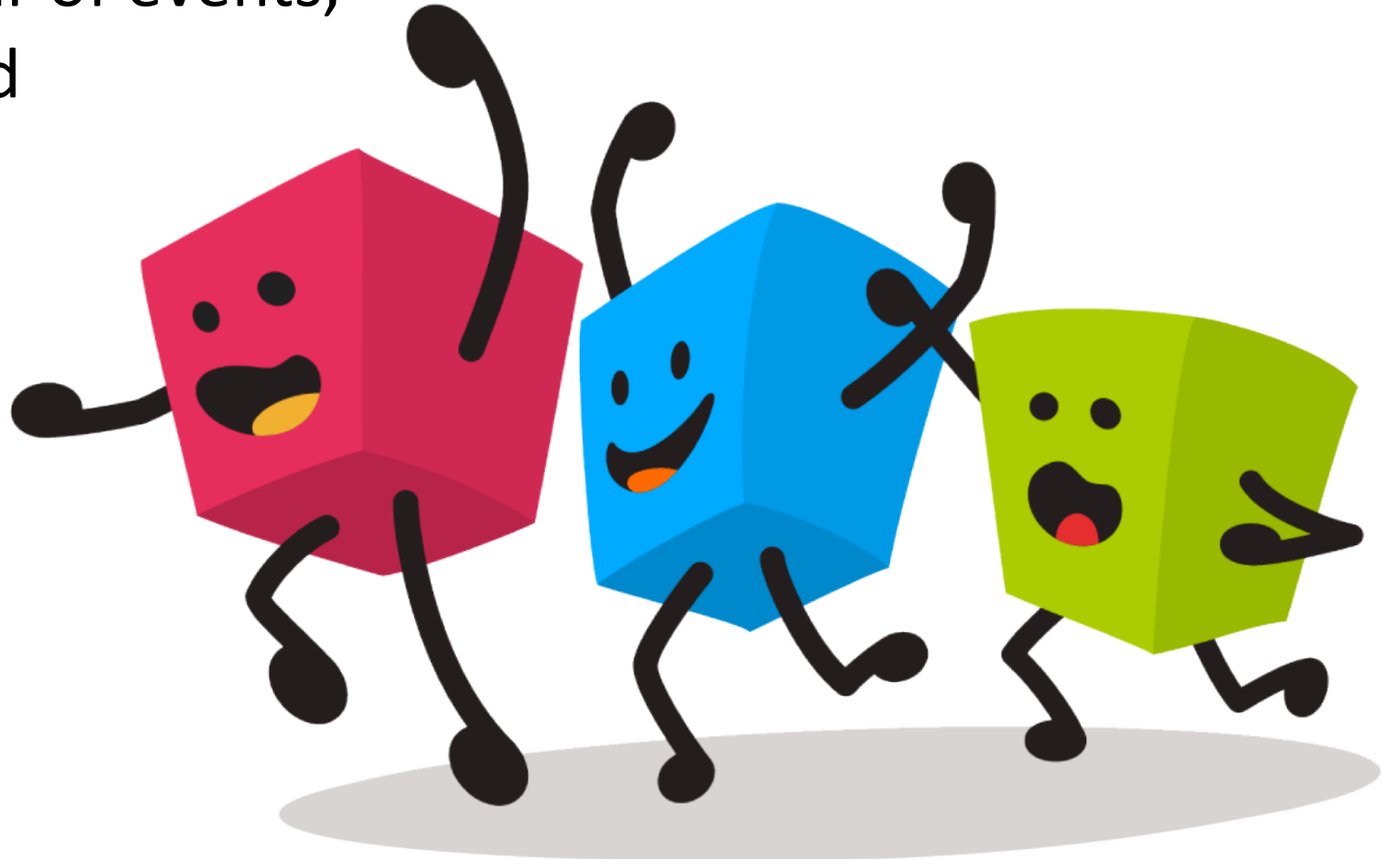


- **Grade Breakdown:**
  - Participation: 20% - Active Engagement
  - Daily Grades: 40% -CAS Activities, Journal Entries
  - Major Grades: 40% - CAS Portfolio Checks, EE Assignments, Presentations, and Essays
- **Make Up Work**
  - If you are absent, please find a means to make up any necessary work.
- **TOK is a requirement of the IB Diploma program. Failure to meet the standards of the course will result in removal from the program.**
- All Daily notes, homework, in-class assignments, essays, research, and Knowledge Questions **MUST** appear in your **composition notebook**.
- Journal entries must indicate **significant thought** in order to be counted.



- **Class Components:**

- TOK – The Theory of Knowledge
- CAS – Creativity, Action, and Service
- EE- The Extended Essay
- The IB World – Calendar of events,  
Survival here and beyond



# Hardaway IB and the Theory of Knowledge



# Why are you here?

- **To keep from having to attend school X, Y, or Z**
- **Because you heard Hardaway was “cool”**
- **My Mama made me come here**
- **To play on some sports team**
- **Other reasons?**





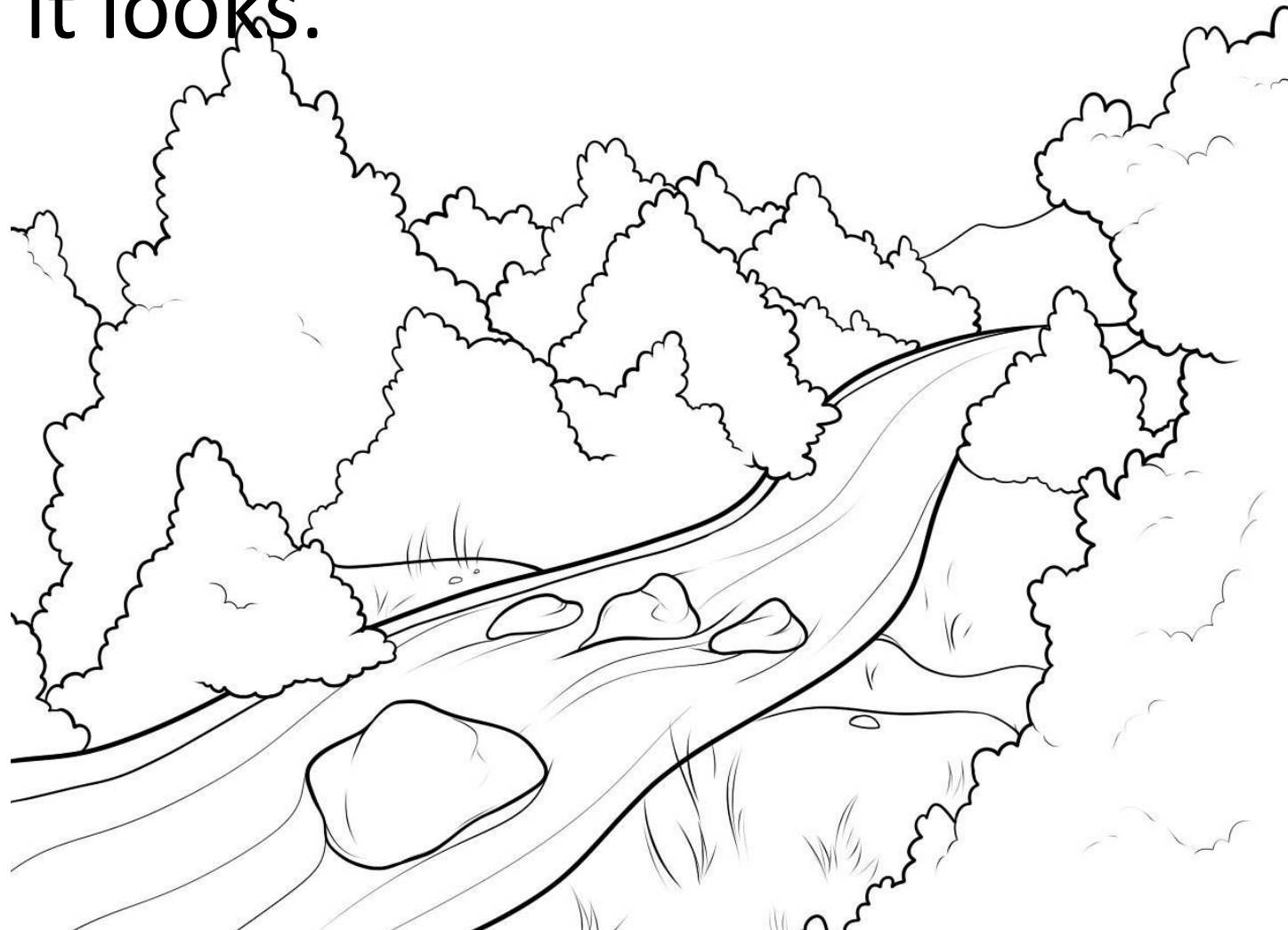
# Who are you?

- **Write down...**
  - **five qualities that describe you.**
  - **one thing that makes you unique.**
  - **one of your greatest strengths.**
  - **one way you are “better” than others.**
  - **one way you are “worse” than others.**
- **How do you judge yourself against others?**
- **How do you judge others against yourself?**
- **How else can you answer the question “who are you?”**



Make a quick sketch of a river. It does not have to be the one here. Keep it simple. This is not Art class so it does not matter how it looks.

“No man ever steps in the same river twice, for it's not the same river and he's not the same man.”  
- Heraclitus



# Why should you be here?

- To prepare yourself for “the next level”
- To improve yourself
- To challenge yourself
- To embrace the journey
- What is the common element in these things?







What does it mean  
to “embrace the  
journey”?

# I Seek Failure: Adam Kreek at TEDxVictoria 2013



<https://www.youtube.com/watch?v=H8P7Ni1NwB0&feature=youtu.be>

# Open-Mindedness

- **What does this mean?**
- **“We critically appreciate our own cultures and personal histories, as well as the values and traditions of others. We seek and evaluate a range of points of view, and we are willing to grow from the experience.”  
– IBO**
- **Does this include...**
  - **tolerance?**
  - **acceptance of differences?**
  - **not judging others as compared to ourselves?**
- **How can we legitimately judge others?**  
**What is the basis of measurement?**



# Who do you want to be?



- **Write down...**
  - **2 goals you have for your life (career, family, personal, etc.)**
  - **one thing you can do to help achieve each of the above goals**
- **3 qualities about yourself you would like to improve**
- **one thing you can do to help improve the above qualities**
- **one strength you have that you can use to help yourself and at least one way you can do so**
- **one strength you have that you can use to help others and at least one way you can do so**

# The IB Mission Statement

**The International Baccalaureate® aims to develop inquiring, knowledgeable and caring young people who help to create a better and more peaceful world through intercultural understanding and respect.**

**To this end the organization works with schools, governments and international organizations to develop challenging programmes of international education and rigorous assessment.**

**These programmes encourage students across the world to become active, compassionate and lifelong learners who understand that other people, with their differences, can also be right.**

# What is Theory of Knowledge?





# Maybe this will help



## *A Cup of Tea*

Nan-in, a Japanese master during the Meiji era, received a university professor who came to inquire about Zen.

Nan-in served tea. He poured his visitor's cup full, and then kept on pouring.

The professor watched the overflow until he no longer could restrain himself. "It is overfull. No more will go in!"

"Like this cup," Nan-in said, "you are full of your own opinions and speculations. How can I show you Zen unless you first empty your cup?"



Do Now - How does a student  
show respect to another  
student?

**Class Rules:** There is only one class rule, but it comes in many forms. The rule is:

**Respect** – This means you must respect Mr. Black, the class as a whole, every other individual, the school, pretty much anything you can think of, but most importantly you must respect yourself and hold yourself to high standards both academically and behaviorally.

The fine print – Raise your hand, listen, bano when you need to, stay engaged, no phones without authorization, no side conversations, clean up after yourself, and in general just be an awesome and amazing person

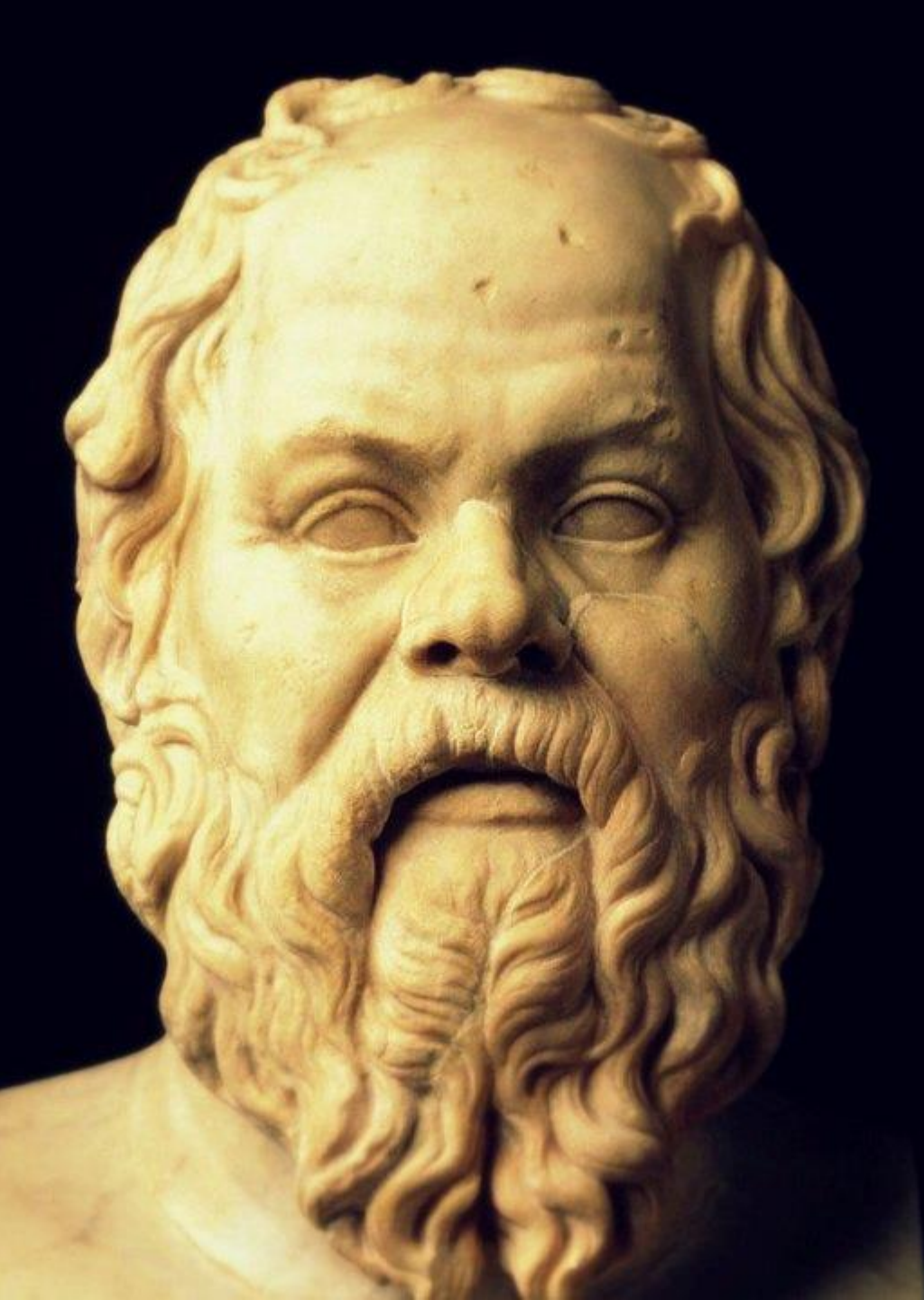
**Ground Rules Handout**



## ***Quote to Ponder***

Philosophy is to be studied not for the sake of any definite answers to its questions, since no definite answers can, as a rule, be known to be true, but rather for the sake of the questions themselves; because these questions enlarge our conception of what is possible, enrich our intellectual imagination and diminish the dogmatic assurance which closes the mind against speculation; but above all because, through the greatness of the universe which philosophy contemplates, the mind is also rendered great, and becomes capable of that union with the universe which constitutes its highest good.

- Bertrand Arthur William



Copy and ponder this quote.



The unexamined life is not  
worth living.

- Socrates

Copy and write a response to the following quote.



The world is very complex, and the more interpretations of it that make themselves available to us, the more free and effective we will be in the world. Philosophical concepts are like tools. The bigger our repertoire of tools, the more effective our work.

- Donald Palmer

# What is TOK?

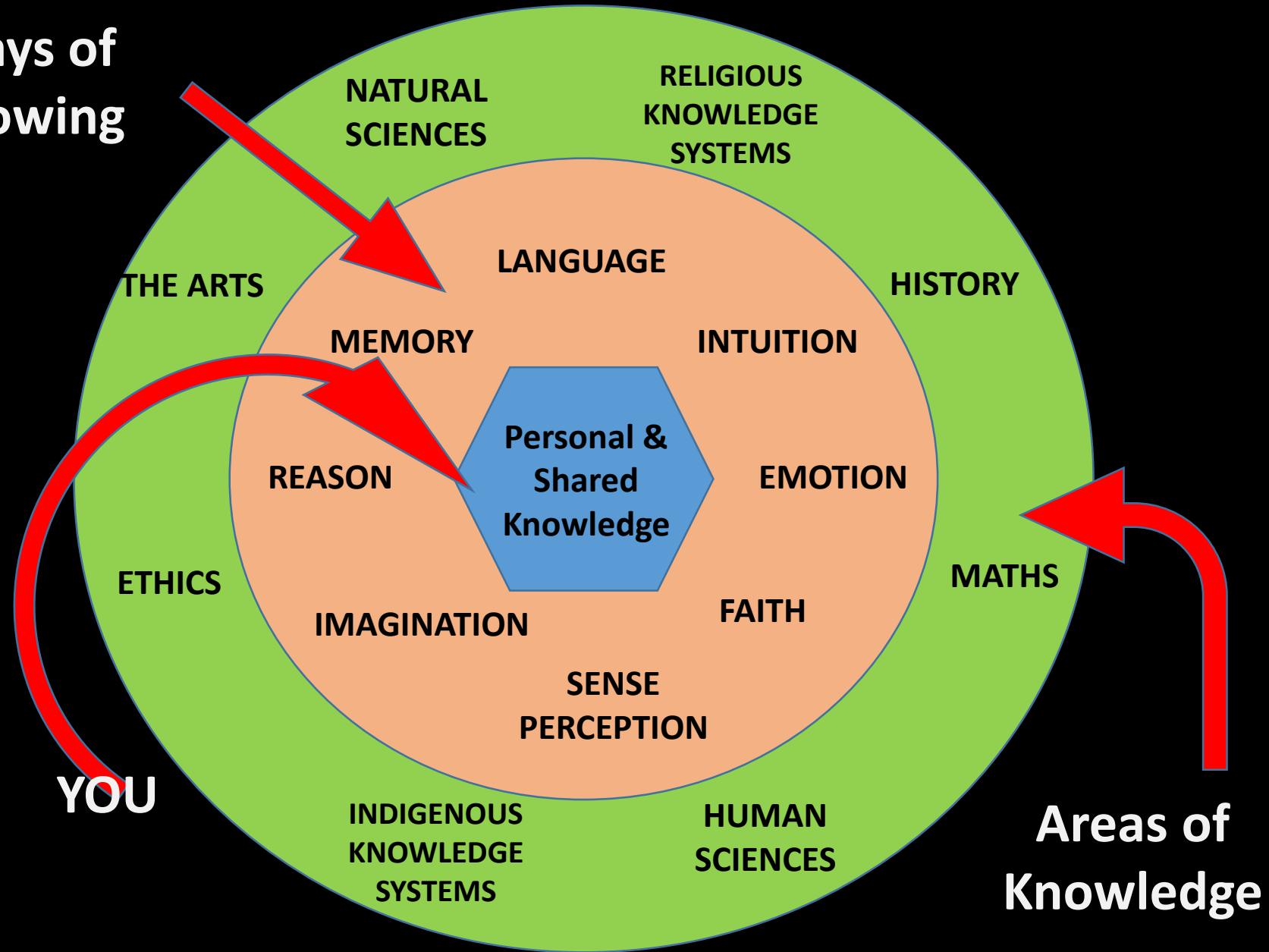


- The TOK course “challenges students and their teachers to reflect critically on diverse ways of knowing and areas of knowledge and to consider the role knowledge plays in a global society. It encourages students to become aware of themselves as thinkers to become aware of the complexity of knowledge and to recognize the need to act responsibly in an increasingly interconnected world.”





**Ways of  
Knowing**



**Areas of  
Knowledge**

# Relationship of TOK within the IB.

- TOK is at the core of the IB programme.
- It sits alongside the extended essay and CAS.
- It is designed to develop a coherent approach to learning which transcends and unifies the academic areas and encourages appreciation of other cultural perspectives.



Interdisciplinary and relevant  
to personal experience!



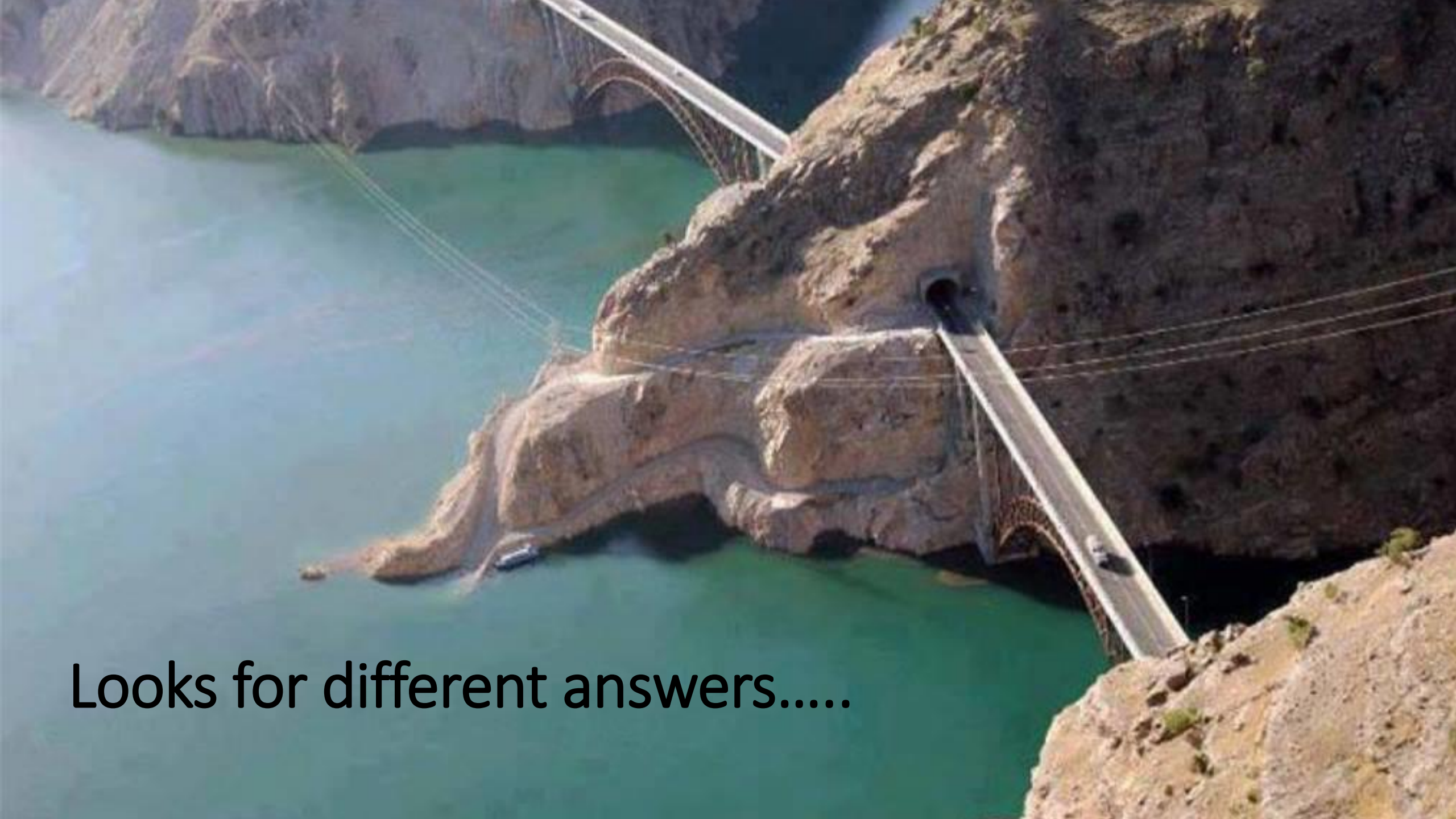
Helps you to think differently....





# Questions how you see things...





Looks for different answers.....

# Suggests a reasoned approach to personal decisions





Questions our ethical choices





Do Now - What was one  
major event that has  
occurred in your life?

who are

you?

# The Journey



You will have just 45minutes for this activity

- **Illustrate your life's journey to this point, making sure to include major events and turning points in making you who you are today.**
- **You may illustrate in any manner you see fit –comic, song, short story, series of sketches, etc.**
- **After you have finished illustrating, write a reflective statement on how each major event has contributed to the way you see the world today.**
- **Present/explain your journey to the class.**

1. Who are you? five qualities that describe you, one thing that makes you unique, one of your greatest strengths, one way you are “better” than others, one way you are “worse” than others.
2. How do you judge yourself against others?, How do you judge others against yourself?, How else can you answer the question “who are you?”
3. I Seek Failure: Adam Kreek at TEDxVictoria 2013 – Notes
4. Who do you want to be? 2 goals you have for your life (career, family, personal, etc.), one thing you can do to help achieve each of the above goals, 3 qualities about yourself you would like to improve, one thing you can do to help improve the above qualities, one strength you have that you can use to help yourself and at least one way you can do so, one strength you have that you can use to help others and at least one way you can do so
5. Git Gob - Notes
6. Donald Palmer quote (The world is very complex) and notes
7. “The Journey” Reflection
8. Howard Garner – multiple intelligences, 1.How could this information be useful to you? 2.How do you think this impacts your view of the world?
9. Learning styles and the Importance of Critical Self Reflection Ted Video - Notes
10. Myers Briggs Notes, How could this information be useful to you? ,How do you think this impacts your view of the world?
11. Has your journey through life affected your personality type or has your personality type influenced the course of actions you have taken? Explain.



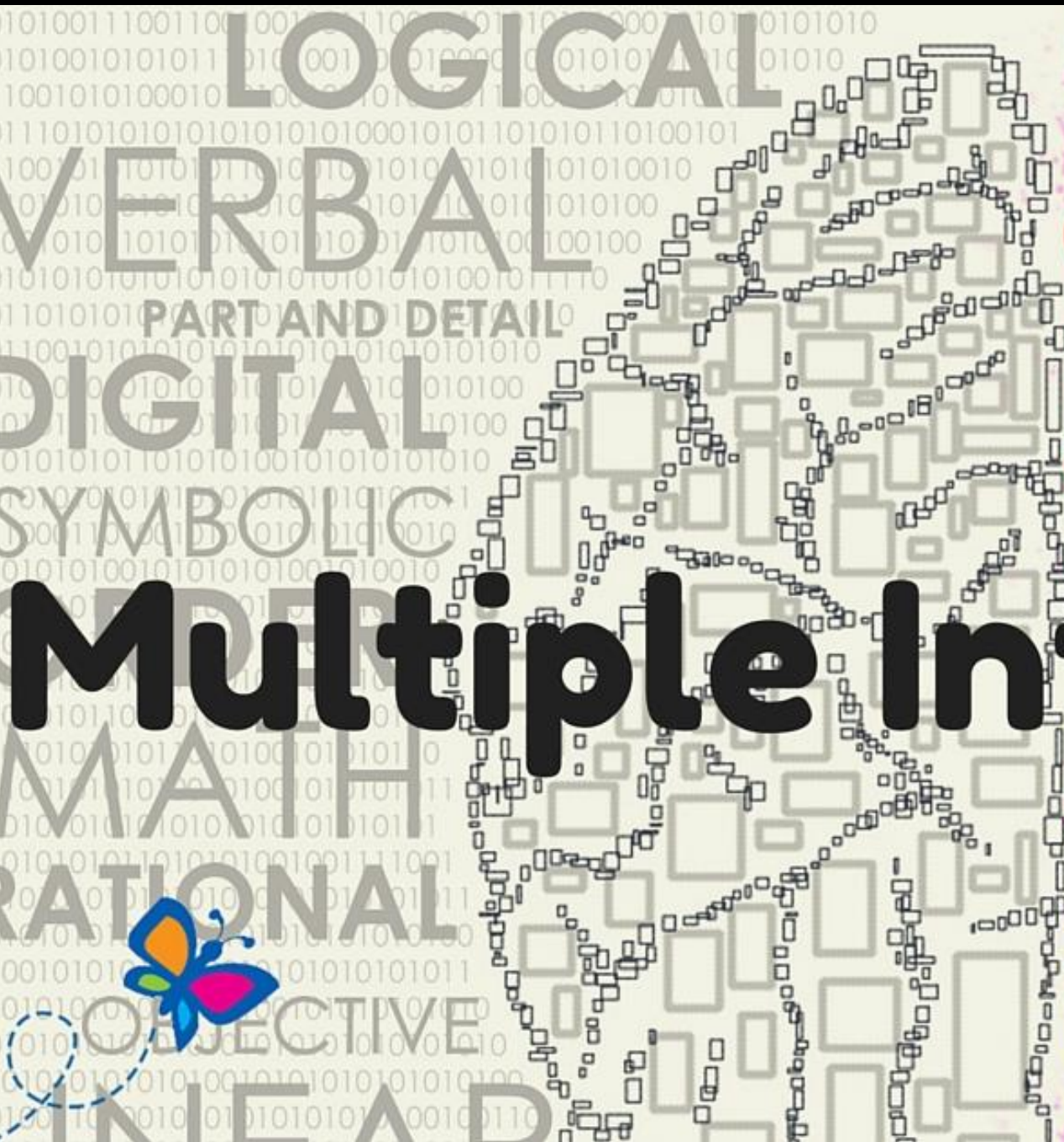
If I needed you to get from one place to another, what would be the best method of helping you?



- Verbal Instructions
- Drawn Map
- Drive you there to see the process first hand

**Do we all learn in the  
same way?**





# Multiple Intelligences



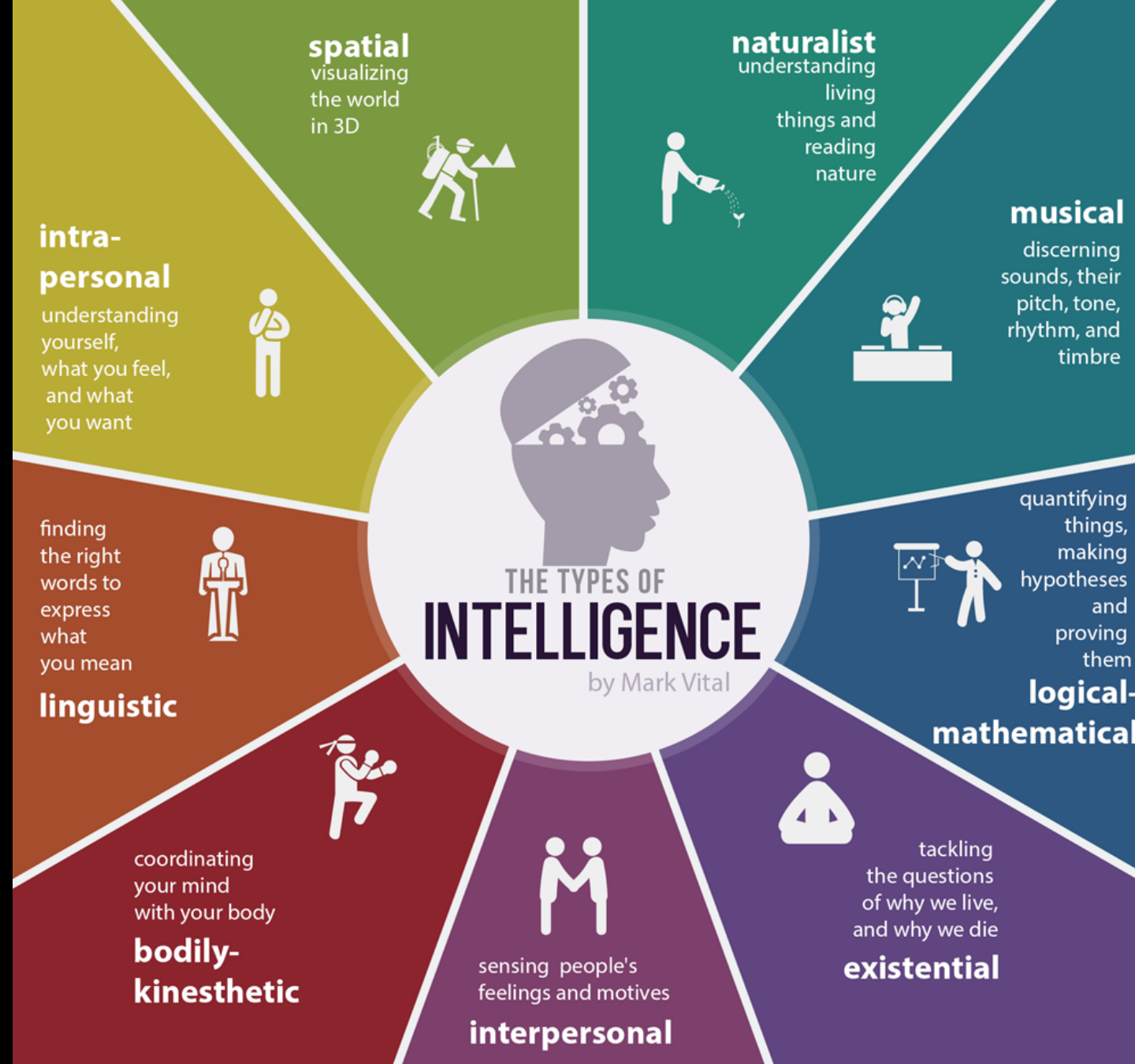
# How do YOU learn?

- Multiple Intelligences –Howard Gardner
- Take the assessment at the following link to determine what your dominant learning styles are and read the results -  
<http://www.literacynet.org/mi/assessment/findyourstrengths.html>
- Write down all of your results. Then copy and answer the questions below.

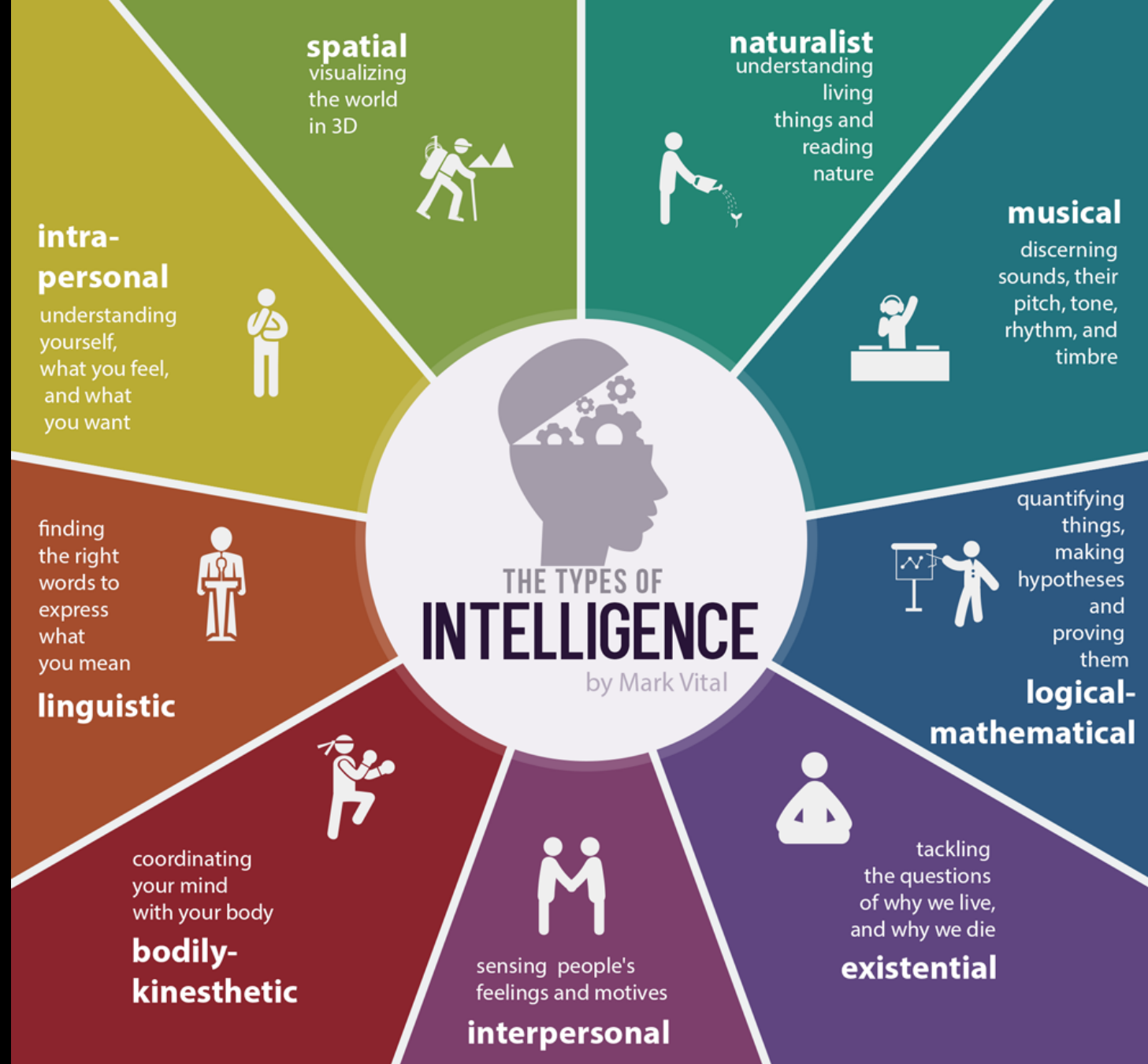
1.How could this information be useful to you?

2.How do you think this impacts your view of the world?





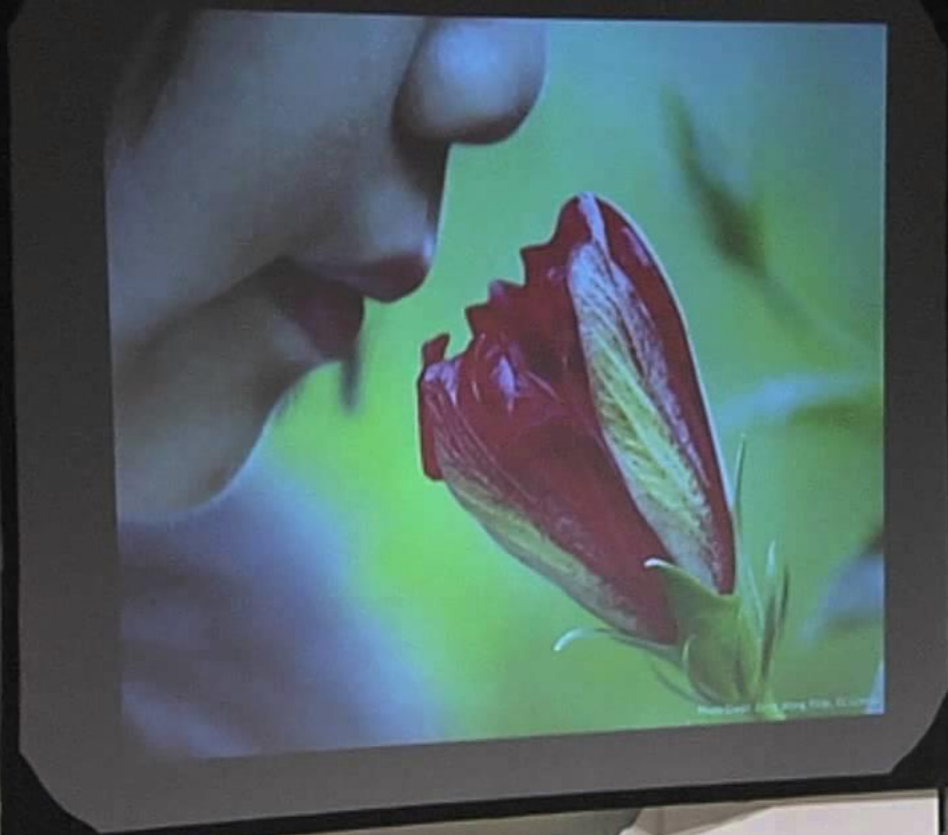
Which area  
was your  
weakest?  
How has that  
affected your  
learning?





# Learning styles and the Importance of Critical Self Reflection

TED video – Tesia Marshik



**TEDx**UWL aCrosse



<https://www.youtube.com/watch?v=855Now8h5Rs>

Your learning style is not the same thing as your personality. Is there any connection though?





# Myers-Briggs Personality Test

- Carl Jung's Psychological Types
- Take the assessment at the following link to determine what your personality type is and read about your results - <http://www.humanmetrics.com/cgi-win/jtypes2.asp>
- **Write down all of your results**

Introverted-quiet

Intuitive-sees patterns

Feeling – prioritize people

Judging-prefer order

Extroverted – outgoing

Sensing- facts and details

Thinking-logical

Perceiving-freedom and flexibility

# INFP

THE HEALER



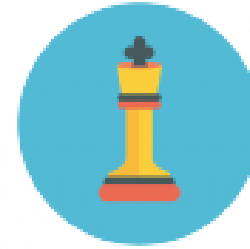
# INFJ

THE COUNSELOR



# INTJ

THE MASTERMIND



# INTP

THE ARCHITECT



# ISFJ

THE PROTECTOR



# ISFP

THE COMPOSER



# ISTJ

THE INSPECTOR



# ISTP

THE CRAFTSMAN



<http://www.truity.com/view/types>

# ENFJ

THE TEACHER



# ENFP

THE CHAMPION



# ENTJ

THE COMMANDER



# ENTP

THE VISIONARY



# ESFJ

THE PROVIDER



# ESFP

THE PERFORMER



# ESTJ

THE SUPERVISOR



# ESTP

THE DYNAMO



*Pin it*

<http://www.truity.com/view/types>



**ISTJ**

Owen Lars

**The Inspector**

Responsible, loyal, and hard working. Have an acute sense of right and wrong and work to preserve established norms and traditions. Somewhat reserved and prefer to work alone, but can make great team members if the need arises. Characterized by the ability to work hard and make sacrifices to keep society running smoothly.

**ISFJ**

C-3PO

**The Protector**

Traditional, loyal, quiet, and kind. Extremely intuitive about people and sensitive to others' needs. Often fear change and try hard to maintain peace and order. Tend to serve behind the scenes without seeking recognition. Like routine and possess excellent follow-through skills. Characterized by the ability to identify the needs of others and meet them selflessly.

**INFJ**

Obi-Wan Kenobi

**The Counselor**

Introspective, caring, sensitive, and complex. Strive for peace and seek to develop and guide others. Value self-control and the pursuit of the greater good. Live their lives with a great purpose, and devoted to the causes they believe in. Characterized by the ability to connect with the essence of others and to identify their strengths.

**INTJ**

Palpatine

**The Mastermind**

Objective, independent, thorough, and adaptable, with well-developed powers of concentration. Natural leaders who strive for perfection. Talented in bringing ideas from conception to reality. Expect perfection from themselves as well as others. Characterized by their desire to produce mastery and achievement that reflects their brilliance.

**ISTP**

Chewbacca

**The Crafter**

Independent and adventurous, yet quiet and reserved. Interested in how and why things work. Adaptable and spontaneous, likes to live in the moment. Loyal to their peers and to their internal value systems, but not overly concerned with respecting rules if they get in the way. Characterized by their ability to get things done.

**ISFP**

Bail Organa

**The Artist**

Quiet, serious, sensitive, and kind. Loyal and faithful, dislike conflict. Have a keen appreciation for beauty due to their highly developed senses. Likely to be original and creative. Highly affectionate, but can be difficult to get to know. Live in the present and yearn for freedom. Characterized by their desire to help and contribute to the well-being of others.

**INFP**

Luke Skywalker

**The Idealist**

Introspective, private, creative, and highly idealistic. Driven by their values, and interested in helping people and serving humanity. Adaptable and laid-back unless a strongly-held value is threatened. Imaginative, often talented in language and writing. Characterized by their ability to be present with another person on a deep level.

**INTP**

Yoda

**The Architect**

Logical, original, reserved, and curious. Focus on ideas, theories, and explanations. Have a calm, serious exterior, but a deeply passionate soul. Appreciate and respect intelligence in others. Have a strong ability to stay on task. Characterized by their ability to design sophisticated systems and theories that improve the lives of others.

**ESTP**

Han Solo

**The Promoter**

Friendly, adaptable, and action-oriented "doers" who are focused on immediate results. Think on their feet and thrive in crises. Informal risk-takers who live fast-paced lives. Never allow rules to get in the way of their ambitions. Straightforward and realistic, take criticism well. Characterized by their ability to get things done and work well with others.

**ESTFP**

Wicket

**The Performer**

Outgoing, friendly, and fun-loving. Likely to be the center of attention in social situations. Love new experiences and live for the moment. Adapt readily to new people and environments, can get bored easily. Enjoy material comforts and want the best of what life has to offer. Characterized by their ability to create positive experiences for others.

**ENFP**

Qui-Gon Jinn

**The Champion**

Enthusiastic, idealistic, inspiring, and creative. Actively advocate for what they feel to be important, attracting others to their causes with excellent people skills, warmth, and positivity. Excited by new ideas but tend to get bored with details. Characterized by their ability to inspire and motivate others with their enthusiasm and passion for life.

**ENTP**

R2-D2

**The Inventor**

Quick, innovative, curious, and resourceful. Excellent ability to understand concepts and apply logic to find solutions. Introspective and carefree nonconformists who are bored by routine. Thrive at finding crafty solutions to technical problems. Characterized by their ability to pursue and succeed at any risk-taking venture.

**ESTJ**

Darth Vader

**The Supervisor**

Practical, realistic, organized, and strategic. Possess natural leadership qualities. Strict boundary setters who take personal responsibility very seriously. Intensely focused on getting results and seek ways to do so in the most efficient way possible. Characterized by their ability to preserve traditions and provide security for their loved ones.

**ESTFJ**

Jar Jar Binks

**The Provider**

Warmhearted, conscientious, and popular. Tend to put the needs of others over their own needs. Sensitive to criticism and need positive reinforcement to feel good about themselves. Supportive and generous, can sometimes come across as overbearing due to their capacity for empathy. Characterized by their genuine concern for others, which drives everything they do.

**ENFJ**

Padme Amidala

**The Giver**

Warm, empathetic, and charismatic with excellent people skills. Highly sensitive to the emotions and needs of others, likely to find hidden potential in others and strive to help them fulfill it. Take their obligations to others very seriously. Characterized by their ability to help develop others, and making a lasting difference in people's lives.

**ENTJ**

Leia Organa

**The Executive**

Assertive, strategic, and decisive, with a natural desire to lead. Intelligent and well-informed, value knowledge and competence. Are quick to see illogical and inefficient systems, and develop intelligent solutions in response. Characterized by their ability to lead confidently and reach goals with excellence.



## ISTJ



Reserved, serious, thorough, and dependable. Capable of shutting out distractions in order to take a practical, logical approach to projects and endeavors. Makes the tough decisions that other types avoid. Well-prepared for eventualities and has a good understanding of most situations. Highly effective at achieving their goals.

## ISFJ



Loyal, committed, and steadfast. Concerned with taking care of people by keeping them safe. Meticulous in accomplishing responsibilities. Reluctant to open up to strangers and can seem standoffish while actually being highly people-oriented and very observant of the feelings of others. Strives to create order at home and at work. Likes to work alone.

## INFJ



Value-driven, independent, and complex. Seeks meaning in relationships and events. Develops a clear and confident vision and executes it to better the lives of others. Often mistaken as an extrovert but is really a private individual. Intensely interested in the well-being of others. Adept at understanding complicated issues. Driven to find cooperative and creative solutions.

## INTJ



Pragmatic, logical, and original. Prepared to lead if no one else seems up to the task. Low tolerance for emotionalism and inefficiency. Gifted at analyzing and formulating complex theories. Quickly sees patterns in external events and formulates a plan for the future. Determined to accomplish goals regardless of what others think. The most independent personality type.

## ISTP



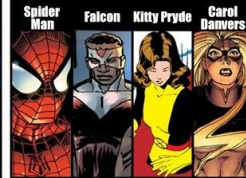
Insightful, adaptable, and self-sufficient. Excels at reaching the heart of a problem and implementing swift repairs. Ideal engineer and natural explorer. Interested in understanding how systems operate. Open to new information and approaches. May sometimes act without regard for own safety. Prone to ignoring everyone while deeply absorbed in a task.

## ISFP



Peaceful, friendly, and sensitive. Takes things at their own pace and tends to live in the moment. Devoted to the people in their lives. Not inclined to debate and dislikes disagreements. Attuned to small variations in the physical world. Highly aware of balance and understands well what does or does not fit. Emotionally well rounded and empathetic toward others.

## INFP



Idealistic, dedicated, and curious. Fueled by intense feeling and deeply held ethics. Seeks an external life that is in keeping with internal values. Loyal to the people and causes important to them. Intensely focused on making the world a better place for people. Flexible and laid-back by nature but aggressively defensive if a person, value, or cause is threatened.

## INTP



Thoughtful, analytical, and abstract. Spends long periods of time alone working through problems and forming solutions. Curious about systems and how things work. Less at ease in social situations. Distrusts authority as a hindrance to the search for knowledge. Little patience for customs that seem illogical. Rare ability to focus in depth to solve complex problems.

## ESTP



Spontaneous, energetic, and debonair. Lives in the moment and likes to share life with friends. Open to new situations and improvising to bring about desired results. Wants to solve problems rather than simply discuss them. Adept at influencing other people. Smooth operator who easily earns the confidence of others. Likes to indulge in the finer things in life.

## ESFP



Creative, non-traditional, and active. Enjoys people and material comforts. Does not allow convention to interfere with life. Excellent team player, focused on completing the task at hand with maximum fun. Tends to rush into things and therefore learns by doing. Generous, optimistic, and persuasive. Often plays the role of peacemaker due to warm and tactful nature.

## ENFP



Imaginative, optimistic, and passionate. Keenly aware of future possibilities and therefore a frequent initiator of change. Spend a great deal of time discussing ideas and possibilities. Bring zest, joy, and liveliness to all aspects of life. Natural leader that people want to follow. Tends to idealize people and can be disappointed when reality fails to fulfill expectations.

## ENTP



Clever, enthusiastic, and innovative. In-depth understanding of how to improve things. Prizes intelligence in self and others. Verbally quick with an occasional perverse sense of humor. Likes to devise unexpected solutions to problems. Takes "it can't be done" as a personal challenge. Rarely does the same thing the same way twice and is bored by routine.

## ESTJ



Realistic, determined, and efficient. A natural leader with no interest in things that have no clear use. Likes to organize and run activities. Dedicated to maintaining institutions and/or society. Good administrator but prone to dismissing the feelings of others. Outgoing and does not hesitate to communicate opinions and expectations to others. Forceful in implementing plans.

## ESFJ



Literal, warm, and genuine. Serious about seeing what needs to be done and then doing it. Bases judgments on an internal belief system. Values tradition and the security it offers. Responds to the physical needs of others with practical care. Has difficulty recognizing the shortcomings of loved ones. Vocal in expressing whether something is right or wrong.

## ENFJ



Supportive, giving, and encouraging. Lives in the world of people possibilities. Has a special talent for bringing out the best in others. Primarily focused on giving love and support to other people. Wants to understand and encourage others. Finds potential in everyone and wants to help others fulfill their potential. Often provides inspiring leadership.

## ENTJ



Dynamic, fair minded, and decisive. Focused on the most efficient and organized means of performing a task. Often a realistic and visionary leader who works to implement a long-term plan. Fiercely independent with a strong will that insulates against external influence. Naturally assertive and outspoken. Desires to order the world according to own vision.



 <p><b>THE EXAMINER</b> <b>ISTJ</b> SEVERUS SNAPE</p> <p>INTROVERTED   SENSING   THINKING   JUDGING</p> <p>DESIGNED BY THEIR DUTY AND DUTY, TAKE ANY TASK SERIOUSLY AND GIVE IT MORE THAN THEIR BEST. SOMEWHAT RESERVED AND PREFER TO WORK ALONE, BUT CAN MAKE GREAT TEAM MEMBERS IF THE NEED ARISES. LOGICAL, STRAIGHTFORWARD THINKERS WHO OFTEN PUT DUTY BEFORE PLEASURE.</p>	 <p><b>THE DEFENDER</b> <b>ISFJ</b> NEVILLE LONGBOTTOM</p> <p>INTROVERTED   SENSING   FEELING   JUDGING</p> <p>TRADITIONAL, LOYAL, KIND AND OBSERVANT OF OTHERS. VALUE STABILITY AND CULTURAL NORMS AND ARE OFTEN CONSISTENT WITH WORK. KNOWN FOR THEIR KINDNESS AND WILLINGNESS TO GO TO ANY LENGTHS TO HELP THOSE IN NEED. OFTEN FEAR CHANGE AND TRY HARD TO MAINTAIN PEACE.</p>	 <p><b>THE COUNSELOR</b> <b>INFJ</b> REMUS LUPIN</p> <p>INTROVERTED   INTUITIVE   FEELING   JUDGING</p> <p>ASTUTE OBSERVERS WHO TAKE INTEREST IN THE NEEDS AND DESIRES OF OTHERS. FRIENDLY, GOOD-NATURED, WORLDLY, AND QUICK TO MAKE CONNECTIONS BETWEEN COMPLEX CONCEPTS. VALUE SELF-CONTROL AND THE PURSUIT OF THE GREATER GOOD, BUT OFTEN HAVE DIFFICULTY STANDING UP FOR THEMSELVES.</p>	 <p><b>THE STRATEGIST</b> <b>INTJ</b> DRACO MALFOY</p> <p>INTROVERTED   INTUITIVE   THINKING   JUDGING</p> <p>NATURAL LEADERS THAT STRIVE FOR PERFECTION. OBJECTIVE, INDEPENDENT, QUICK-THINKING, AND ADAPT-ABLE. EXCEL AT PREDICTING HOW EVENTS WILL PLAY OUT USING THEIR KEEN AWARENESS OF CONCEPTUAL PATTERNS. OFTEN RATHER PEDANTIC, BUT TEND TO HAVE AN AURA OF DEFINITE SELF-CONFIDENCE.</p>
 <p><b>THE CRAFTSMAN</b> <b>ISTP</b> HARRY POTTER</p> <p>INTROVERTED   SENSING   THINKING   PERCEIVING</p> <p>FIERCELY INDEPENDENT, ADVENTUROUS, DON'T LIKE MUCH ATTENTION. MORE INTERESTED IN THEIR OWN PURSUITS RATHER THAN OTHERS. DO NOT BELIEVE IN RULES AS THEY PROHIBIT THEIR ABILITY TO DO THEIR OWN THING. OFTEN LEARN BEST BY DOING, AND LIKE TO TAKE THINGS APART TO UNDERSTAND THEM.</p>	 <p><b>THE ARTIST</b> <b>ISFP</b> RUFUS SCRIMGEOUR</p> <p>INTROVERTED   SENSING   FEELING   PERCEIVING</p> <p>KEENLY ATTUNED TO THE WORLD OF SENSATION POSSIBILITIES. EXTREMELY LOYAL AND HIGHLY AFFECTIONATE, BUT ALSO QUITE SHY. ORIGINAL AND QUICK TO REBEL AGAINST IDEAS OR REGIMENTS THAT GO AGAINST THEIR VALUE SYSTEMS. VALUE THEIR PRIVACY AND OFTEN TAKE MATTERS TOO PERSONALLY.</p>	 <p><b>THE DREAMER</b> <b>INFP</b> LUNA LOVEGOOD</p> <p>INTROVERTED   INTUITIVE   FEELING   PERCEIVING</p> <p>SWEET-NATURED, COMPASSIONATE, AND IDEALISTIC INDIVIDUALS WHO ARE QUIET, BUT SPEAK DIRECTLY FROM THE HEART. OFTEN HAVE THEIR HEAD IN THE CLOUDS, BUT THIS ONLY SERVES TO FUEL THEIR FLOUNDERING CREATIVITY. SEEK SPACE FOR THEMSELVES AND OTHERS. OFTEN GULLIBLE AND EASILY DISTRACTED.</p>	 <p><b>THE ARCHITECT</b> <b>INTP</b> HERMIONE GRANGER</p> <p>INTROVERTED   INTUITIVE   THINKING   PERCEIVING</p> <p>A NATURAL-BORN THINKER. HAVE A CALM, SERIOUS EXTERIOR, BUT THIS HIDES A DEEPLY PASSIONATE SOUL. OFTEN COME UP WITH SYSTEMS WITH WHICH TO SOLVE PROBLEMS AND ARE QUICK TO CORRECT OTHERS. TEND TO GET SO LOST IN THOUGHT AND THE PURSUIT OF INFORMATION THAT THEY NEGLECT TO LISTEN TO OTHERS.</p>
 <p><b>THE PROMOTER</b> <b>ESTP</b> GINNY WEASLEY</p> <p>EXTROVERTED   SENSING   THINKING   PERCEIVING</p> <p>FOCUS ON LIVING EXTERNALLY AND TAKE IN INFORMATION IN A LITERAL, BLACK-AND-WHITE FASHION. BLUNT, STRAIGHTFORWARD RISK-TAKERS WHO AREN'T AFRAID TO PLUNGE RIGHT IN AND GET THEIR HANDS DIRTY. NEVER LET RULES GET IN THE WAY OF THEIR AMBITIONS, AND ACTIVELY SEEK OUT THE CHALLENGES IN LIFE.</p>	 <p><b>THE PERFORMER</b> <b>ESFP</b> FRED &amp; GEORGE WEASLEY</p> <p>EXTROVERTED   SENSING   FEELING   PERCEIVING</p> <p>LOUD AND PROUD PLEASURE-SEEKERS WITH A LOVE OF PLEASING THE CROWD. SEEK TO BE THE CENTER OF ATTENTION AND HATE BEING ALONE UNDER ANY CIRCUMSTANCES. WANT THE VERY BEST OF WHAT LIFE HAS TO OFFER AND GET ROAD RAGE EARLY. NOT TEND TO HAVE IMPECCABLE TASTES IN LIFE'S NICETIES.</p>	 <p><b>THE CHAMPION</b> <b>ENFP</b> RON WEASLEY</p> <p>EXTROVERTED   INTUITIVE   FEELING   PERCEIVING</p> <p>OPEN-HEARTED, EXCITABLE, CREATIVE, FUNNY AND FULL OF WILD AMBITION. ALWAYS LOOK ON THE BRIGHTEST SIDE AND KEEP THEIR CHINS UP, EVEN IN THE FACE OF MAJOR UPSTAKES. EXCEL IN MANY ASPECTS OF WHAT THEY DO AND HOLD DEARER ONES CLOSE TO THE HEART. FIERCELY BELIEVE THAT LIFE IS FOR THE LIVING.</p>	 <p><b>THE INVENTOR</b> <b>ENTP</b> SIRIUS BLACK</p> <p>EXTROVERTED   INTUITIVE   THINKING   PERCEIVING</p> <p>WITTY, CLEVER, AND INTERESTING SOCIALIZERS WHO ARE CONSTANTLY THINKING ON THEIR FEET. TEND TO BE VERY GOOD LIARS WHO NEVER SET AWAY FROM TELLING A GOOD STORY. PLAYFUL AND IN MIND OF CONSTANT STIMULATION IN ORDER TO KEEP UP WITH THEIR FAST-PACED DEVELOPMENT OF NEW IDEAS.</p>
 <p><b>THE SUPERVISOR</b> <b>ESTJ</b> MINERVA MCGONAGALL</p> <p>EXTROVERTED   SENSING   THINKING   JUDGING</p> <p>STRICT BOUNDARY SETTERS WHO TAKE PERSONAL RESPONSIBILITY VERY SERIOUSLY. HAVE A STRONG PERSONAL MORAL CODE, TO WHICH THEY RIGIDLY HOLD THEMSELVES AND OTHERS. THEY ARE EXTREMELY ORGANIZED AND FOCUSED, TO THE POINT THAT THEY VERGE ON BEING PRECOCIOUS, BUT THEY ARE NEVER DOING OR DIMISSIVE OF A GOOD FIGHT.</p>	 <p><b>THE PROVIDER</b> <b>ESFJ</b> LILY EVANS-POTTER</p> <p>EXTROVERTED   SENSING   FEELING   JUDGING</p> <p>GENEROUS, COMPASSIONATE, AND A BIT TIDY. THEY CAN DESPITE FOR THOSE AROUND THEM AND ARE HAPPY WHEN THEY ARE ABLE TO LEND A HAND. BELIEVE IN "SERVICE BEFORE SELF." THEY CAN SOMETIMES COME ACROSS AS OVERSHARING OR SMOTHERING DUE TO THEIR ABOVE-AVERAGE CAPACITY FOR EMPATHY. BRISTLE, BUT POLITE AND EAGER TO MAINTAIN PEACE.</p>	 <p><b>THE TEACHER</b> <b>ENFJ</b> ALBUS DUMBLEDORE</p> <p>EXTROVERTED   INTUITIVE   FEELING   JUDGING</p> <p>LIGHTHEARTED, EMPATHETIC, INSPIRING, AND ALWAYS READY TO SHOULDER THE BURDEN OF OTHERS. TEND TO BE VERY EASYGOING, UNLESS SOMEONE CLOSE TO THEM IS THREATENED, IN WHICH CASE THEY BECOME FORMIDABLE ENEMIES. SEND WHEN PEOPLE NEED GUIDANCE AND TRY TO PROVIDE IT, AND TAKE THEIR OBLIGATIONS TO OTHERS VERY SERIOUSLY.</p>	 <p><b>THE MAVERICK</b> <b>ENTJ</b> JAMES POTTER</p> <p>EXTROVERTED   INTUITIVE   THINKING   JUDGING</p> <p>BLUNT, FIRM, AND NATURALLY GIFTED LEADERS. THEY ARE QUICK-THINKING MASTERS OF NEGOTIATION WHO TRUST THEIR INSTINCTS WHEN MAKING DECISIONS, AND TAKE FULL RESPONSIBILITY WHEN THEIR DECISIONS PROVE TO BE FLAWED. LEAVE NO ROOM FOR EMOTIONAL INTERFERENCE IN THEIR PLANS. WORK TIRELESSLY TOWARD LOFTY GOALS, AND ARE OFTEN VERY FRUGAL WITH THEIR MONEY.</p>

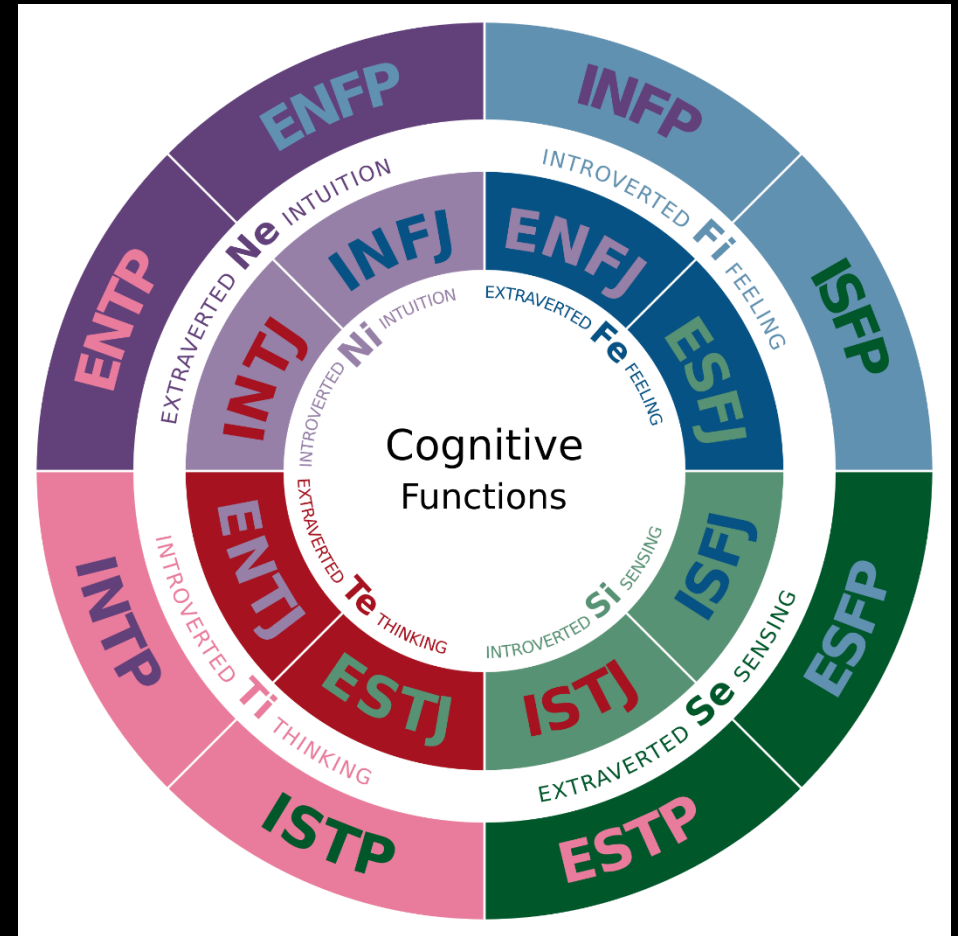
# Personality Myth



<http://www.npr.org/programs/invisibilia/482836315/the-personality-myth>

Write your response to the questions below

1. How could this information be useful to you?
2. How do you think this impacts your view of the world?





Has your journey through life affected your personality type or has your personality type influenced the course of actions you have taken? Explain.



1. Who are you? five qualities that describe you, one thing that makes you unique, one of your greatest strengths, one way you are “better” than others, one way you are “worse” than others.
2. How do you judge yourself against others?, How do you judge others against yourself?, How else can you answer the question “who are you?”
3. I Seek Failure: Adam Kreek at TEDxVictoria 2013 – Notes
4. Who do you want to be? 2 goals you have for your life (career, family, personal, etc.), one thing you can do to help achieve each of the above goals, 3 qualities about yourself you would like to improve, one thing you can do to help improve the above qualities, one strength you have that you can use to help yourself and at least one way you can do so, one strength you have that you can use to help others and at least one way you can do so
5. Git Gob - Notes
6. Donald Palmer quote (The world is very complex) and notes
7. “The Journey” Reflection
8. Howard Garner – multiple intelligences, 1.How could this information be useful to you? 2.How do you think this impacts your view of the world?
9. Learning styles and the Importance of Critical Self Reflection Ted Video - Notes
10. Myers Briggs Notes, How could this information be useful to you? ,How do you think this impacts your view of the world?
11. Has your journey through life affected your personality type or has your personality type influenced the course of actions you have taken? Explain.